



# **Jana Wood**

## Gestures, the land speaks

**14 January – 5 February 2023**  
**Community Gallery**

Jana works within a liminal space between abstraction and representation. Her images, colour choices and framing devices work metaphorically to gently engage with ideas around climate change, the colonial grid and re-wilding of spaces.

*Gestures, the land speaks*, is a group of semi-abstract works that continues an on-going expression of connection to place and investigation of space - at Port Waikato, where I live and work. These works have developed carefully over the past year, resulting from a slow kind of looking and feeling, hearing, listening, and being, in the surrounding whenua, that is not just visual observation, but is an all-encompassing kind of deep awareness of surroundings.

Fluidity and flow runs through the work. The Awa (Waikato River) is always present in my studio, as well as the Moana (the Tasman sea). My studio and home faces the Awa to the North-East and the Moana to the North-West. As I work, I can feel the Mauri (life-force) in the land, the mana of the Waikato Awa meeting Moana, turbulent, sometimes gentle. I feel and hear movement and fluidity, in the land, the elements and the water that runs underneath and around me. The Moana is a constant presence, I can hear it most days, it gets closer each year, the result of a rising ocean. Living here, I'm so much more aware that we're on the edge of an island within a massive, sublime ocean. It's incredibly elemental.

1.  
Hau uru, West Wind  
Oil paint on rabbit skin gesso  
on board 620x600mm





2.

Te Hikoi Po, Night Walking  
Oil paint on rabbit skin gesso  
on board 700x700mm

*(Selected finalist in National  
Contemporary Art Award  
2023)*



3.

Te whenua mahana, The  
warm land

Oil paint on rabbit skin gesso  
on board 320x300mm





4.  
Nga whatitiri, Thunder rolls  
Oil paint on rabbit skin gesso  
on board 370x350mm

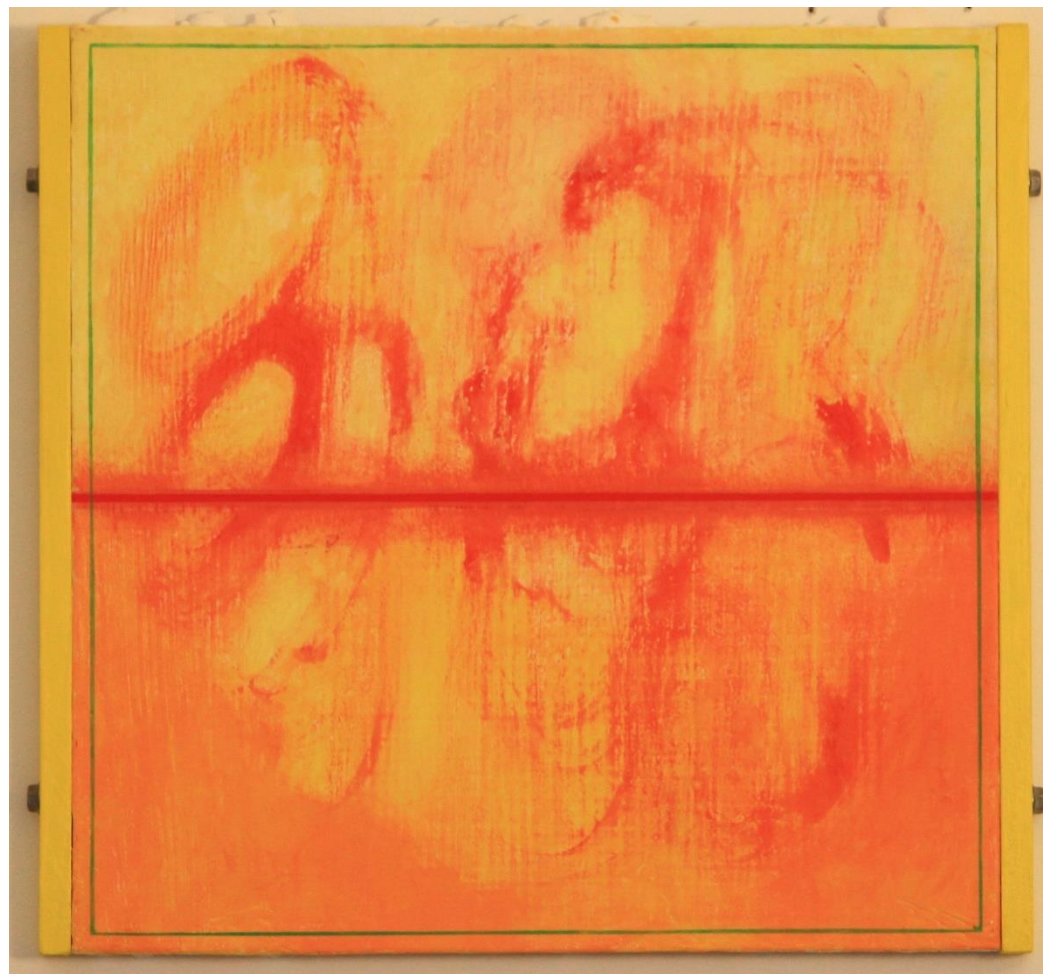


5.  
Te Atua o te moana, The god  
of Sea  
Oil paint on rabbit skin gesso  
on board 720x700mm





6.  
Tōnga o te rā, Sunset (3)  
Oil paint on rabbit skin gesso  
on board  
320x300mm

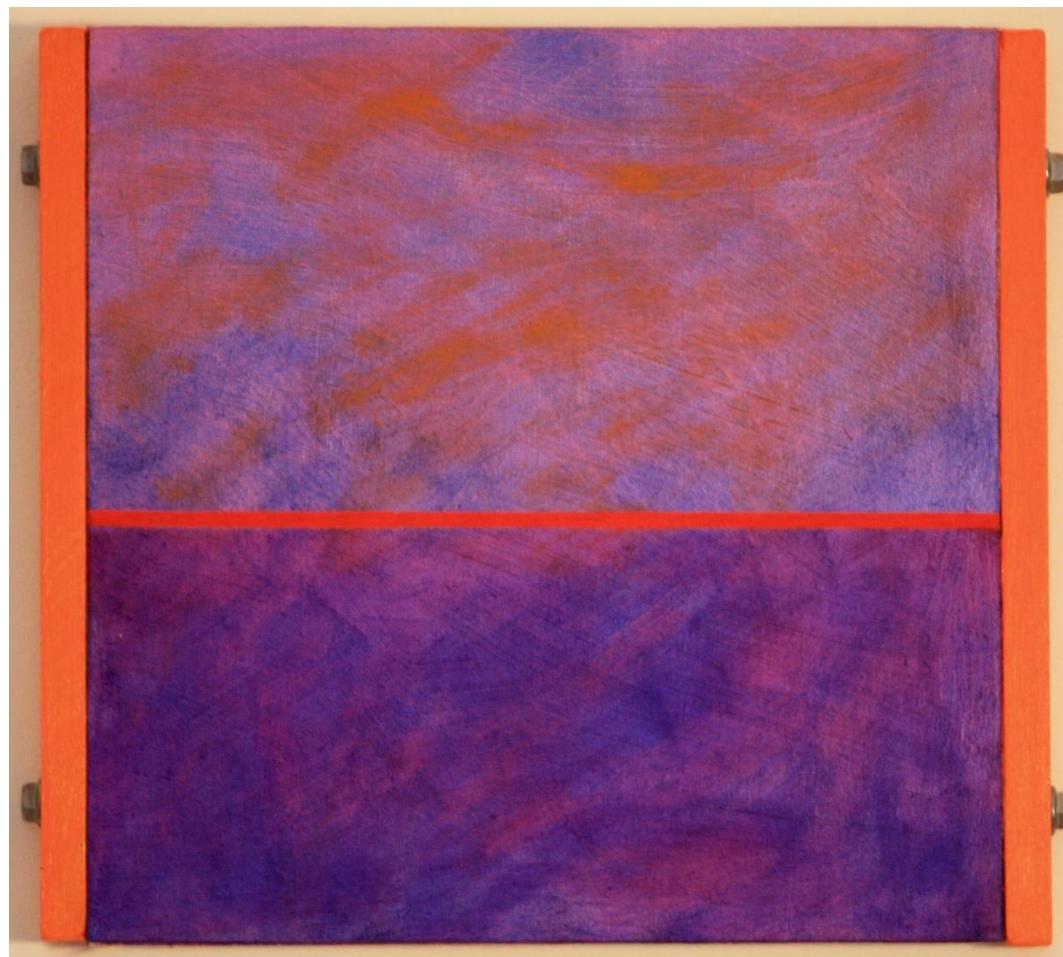


7.  
Āwhā Māwhero, Pink Squall  
Oil paint on rabbit skin gesso  
on board  
700X720mm





8.  
Tōnga o te rā, Sunset (2)  
Oil paint on board  
220x200mm



9.  
Tōnga o te rā, Sunset (1)  
Oil paint on board  
220x200mm





10.  
Tōnga o te puna, Spring Sunset  
(1)  
Oil paint on board  
220x200mm



11.

Inapo, Last night

Oil paint on board

320x300mm





Wood has a Post Graduate Diploma from Elam School of Fine Arts Auckland, and a Bachelor of Visual Arts from AUT Auckland. Her work is held in private collections both in NZ and overseas, as well as the James Wallace Arts Trust collection. She has been selected finalist in many awards over the years, most recently two works selected for the 2022 National Contemporary Art Award at Waikato Museum Te Whare Taonga O Waikato. Recent exhibitions include Three Painters at McLeavey Gallery, A'Float at Arthaus Gallery, Iteration 14 MotherMother Lot 23 and Lurky Spaces at Artfull's Arcadia, Auckland.

[janawoodstudio.com](http://janawoodstudio.com)